

### **Did you know**

There is no public art anywhere in King's Cross

### **Did you know**

Wharfdale Road lies at the centre of the King's Cross community

### **Did you know**

1,052 people live in the immediate area of Wharfdale Road

### **Did you know**

An average of 1,305 vehicles use Wharfdale Road every day - over 900 cars and over 400 heavy vehicles

## **Let's make a green art installation for King's Cross**



Isn't this ugly expanse of wall just crying out for lush, green plants?

With a bit of imagination and enthusiasm our local community could transform it into a beautiful vertical urban green space.

Wouldn't it be great to plant our vertical landscape in a sculptural terrace planter reflecting the rich history of our area.

And why shouldn't it be fun too? Let's involve local kids in designing and building an exciting vertical landscape using subtle lighting, scent and the changing seasons.

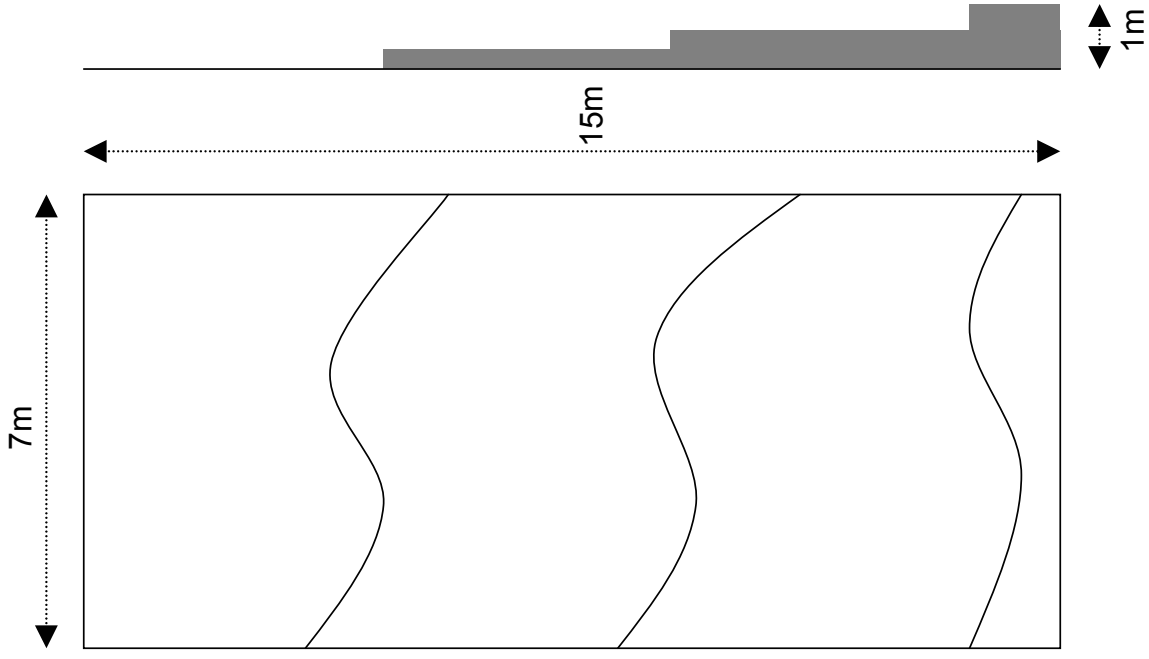
And in all this, let's create new homes for our urban wildlife – blackbirds, starlings, sparrows, robins, green and gold finches, bats and bugs could move in and live rent free.

Forming the northern end of the King's Cross gyratory system, Wharfdale Road London N1 is home to this wall space, ideally placed for a vertical landscape combined with an exciting new public art installation.

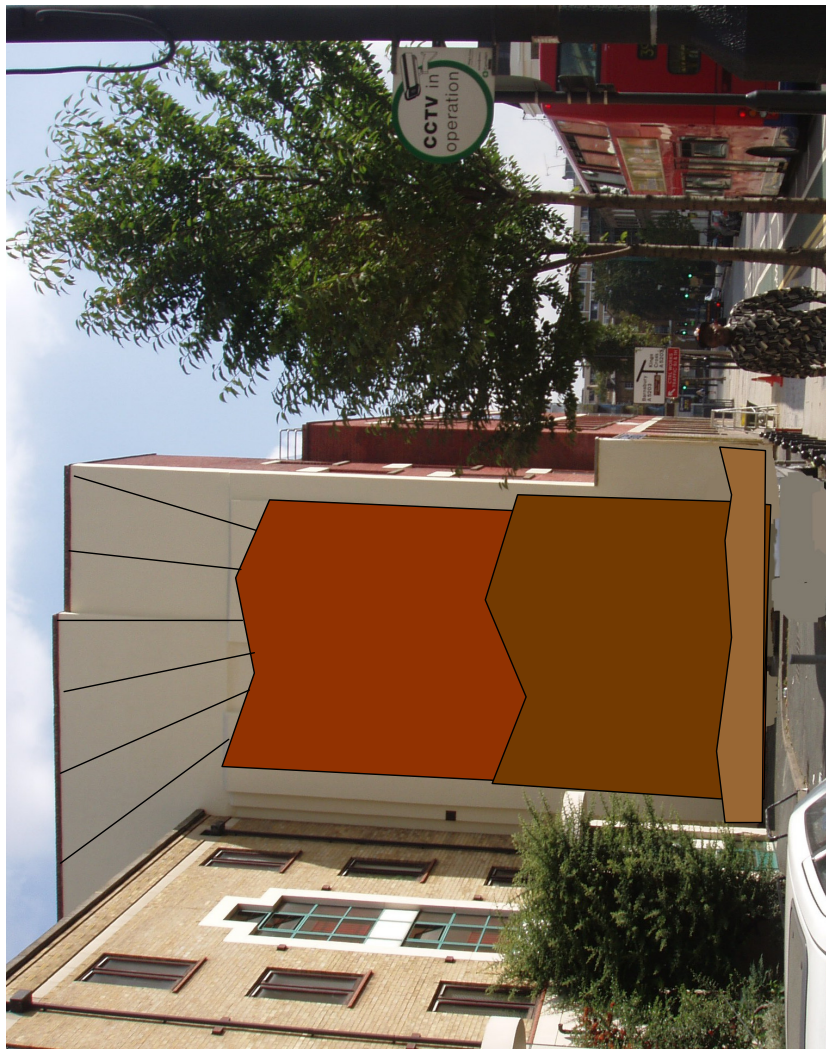
# Contents

<b>Page 4:</b>	<b>The Project</b>
	Vertical landscape and inspirations
	Sustainability – the big difference
	Sensory vertical landscape
	Public art installation
	Community involvement and diversity
	Focus on the young and the old
	Local artists
<b>Page 8:</b>	<b>Who we are</b>
<b>Page 9:</b>	<b>Partners and supporters</b>
<b>Page 10:</b>	<b>Money</b>
	Budget
	How you can donate

## Planter scribbles



Very rough idea showing the three tiered corton steel planter. Each planter will have cut outs for hanging plants. Some areas could even have dwarf trees. The steel array at the top allows for climbing plants. Bird, bat and bug houses would be included. The design for the final planters will be done by the community – particularly local youth working with local elderly people.



## The Project

### Vertical landscape and inspirations

The idea started with local residents. Following the hugely successful work completed by John Ashwell to plant over 150 trees in the King's Cross area stretching from the Regent's Canal to Pentonville Road, it was felt that this ugly bare wall could be made into something beautiful, ecologically beneficial and a positive addition to the King's Cross green corridor, home to a variety of wildlife particularly birds and bats.

From there, Mike Jackson expanded the project by an inspired thought: combining a truly sustainable green wall with an art installation. A seven metre long by one metre wide terraced corton steel planter designed by local artists and integrated with a stunning steel rope array will form the main structure.

The three in one terraced planter will be home to indigenous planting selected for their attractiveness to wild birds, their low maintenance and hardy qualities. Climbing up the steel rope array will be climbing (not self clinging) plants, selected for the same features. Because the climbing plants will not be self clinging, they will naturally follow the steel rope array whilst being easy to prune. They will not be invasive to the wall itself and will add to the insulation of Lighterman House.

Incorporated in the steel rope array and climbing plants, and forming an integral part of the design, will be nesting places for birds and bats.

Rain water running off both Battlebridge Court and Lighterman House will be used to irrigate the planter and fill large roof and ground level water butts for use during the drier summer months.

The vertical landscape will face west and catch the last of the evening sun as it dips behind the railway stations, particularly in summer. The

project will make best use of this ideal orientation. During the dark evenings imaginative, eco-friendly and subtle lighting will be used to emphasise the textures and colours that the vertical landscape will bring to Wharfdale Road.

### Sustainability – the big difference

Green walls and vertical gardens are starting to make an impact on urban spaces. They generally face a big problem: they tend to have to rely on hydroponics to some degree, using a great deal of water and synthetic feed.

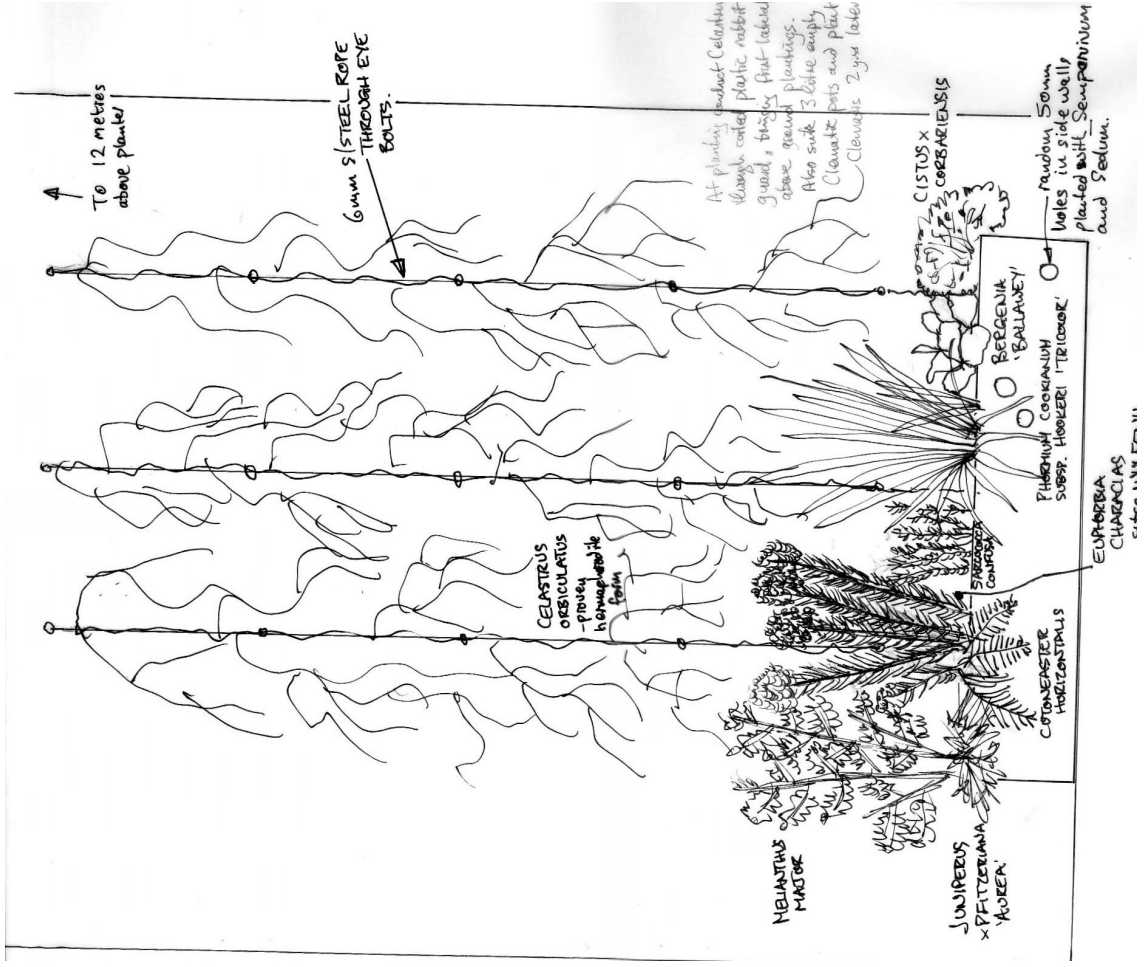
This vertical landscape, the brainchild of a local horticulturalist, will rely on deep insulated planting and sub-irrigation. The deep planters will give access to a great deal of soil – usually missing in green walls. Buried deep in the soil will be drip-feed irrigation pipes, fed by rain water run-off from the two adjoining roofs. Rain water will be stored in large scale tanks designed to complement the whole design. The terraced planter will be insulated using sustainable materials to keep roots cool in summer and protected from frost in the winter.

This vertical landscape will not add to the rain water run-off problem that increasingly leads to flash flooding. In fact, it will help slow down rain water run-off and be a positive environmental benefit to the whole community.

### Sensory garden

At base level, the planter will again be home to specially selected indigenous plants. This time they will be selected not only for looks and wildlife friendliness but also for scent and touch for those with visual impairments to enjoy. Cut outs in the planter itself will be home to lower level planting.

First thoughts



### **Public art installation**

Design of the planter will take its inspiration from the local history and culture. There is so much to draw on here, for example:

*Health:* Battlebridge was the name given to this area before a monument to George 4<sup>th</sup> was built in the eighteenth century. Battlebridge was an area of spas and gardens where people would come to take the waters.

*Transport:* Battlebridge was once a turnpike. Now, we are known for our railway, canal, underground and recently Eurostar.

*Horses and stables:* There were once stables all over this area, horses stood ready to take loads from the canal and railways across the Capital.

*Brewing:* There are so many pubs in this area because it was home to a large brewing industry many years ago.

*Ice and Ice Cream:* Gatti brought ice to store here from Scandinavia before distributing it across London in the years before refrigeration.

*Jams and marmalades:* Battlebridge Court was once a jam factory, before it was torn down to make way for the flats that stand here now.

### **Community involvement and diversity**

At the centre of the project is community involvement. A series of workshops will run to gather design ideas from all sections of the King's Cross community. The results will form a design brief for our lead designer helping shape the terraced planters, steel array, subtle lighting and planting scheme.

### **Focus on the young and the old**

Our organisation development consultant will work with local youth projects training a team of young disadvantaged people to run the design workshops. Training will include active listening skills, basic consultancy skills and a range of communication skills. Highly participative training and consultation methods will be used throughout. This will result in a youth consultation team.

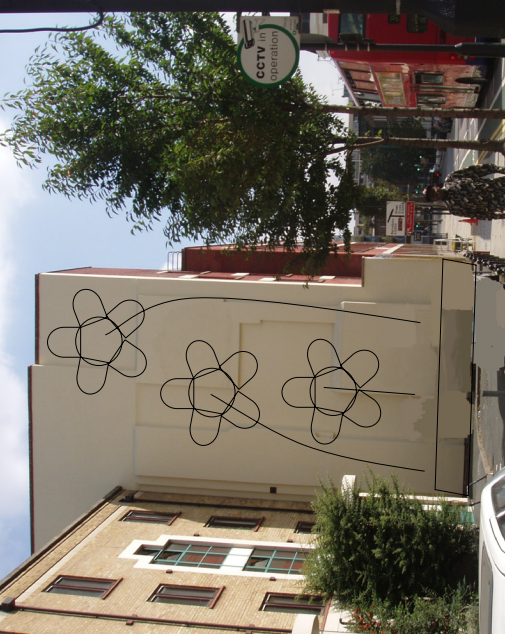
The youth consultation team, supervised by local youth workers, will run the design workshops. There will be workshops for all members of the community, but the views of the elderly will be particularly sought. The aim will be to bring the two generations together, the elderly bringing ideas and suggestions based on a wealth of life history, the young using newly learned listening and communication skills to document the feedback they get from elderly people.

### **Local artists**

King's Cross is home to many artists and crafts people working with a vast range of materials. We will invite artists to give their interpretations of what our consultation workshops have produced. These will be fed back to the community who will decide which artist or artists we will commission. When commissioning the work, the way in which our artists work with local youth will be vital. Both individuals involved in the youth consultation team and those whose preference is to be more hands-on will have the opportunity of working with our artists making the final terraced planter, steel array, water tanks and lighting.

In the same way, local youth will have the opportunity of working with our horticulturalist to design and complete the final planting scheme.

**Some very daft early ideas for trellis**



## Who we are

### King's Cross Community Projects

#### **John Ashwell**

John has spent the last seven years improving the King's Cross area for the benefit of the community. He gave up his career as an accountant to revamp the exteriors of an historically important row of Georgian terrace houses in King's Cross and to plant hundreds of trees throughout the area. As a result there is now an elegant sweep of houses standing behind cast-iron railings. John ensured the few original railings were re-cast at a foundry so that the new railings would look as worn as the originals. The corner finials were redesigned and copied by hand in bronze. Particular attention was paid to their historical colour. John was able to tap into English Heritage single regeneration budgets, conservation area protection schemes and local authority funding totalling £165,000 for the terrace and £50,000 for the trees. He got a further contribution from P&O Developments and inspired his neighbours to raise hundreds more by collecting door-to-door. The area north east of the station is home to a rich mix of trees, all thanks to John. He now manages similar construction projects throughout London.

#### **Mike Jackson**

Mike has been teaching gardening for over 25 years and has worked in the horticulture industry for over 35 years. Trained at Kew Gardens, he gained the Kew Diploma in Horticulture. He has run his own nursery, been a Head Gardener, run the Horticulture Section of a college, been a Registered Instructor with the Agricultural Training Board and broadcast for the BBC. Mike is currently an examiner for

the Royal Horticultural Society (RHS) and Head of Social Enterprise Development and Training at Camden Garden Centre for The Southern Task Educational Trust. He provides training in horticulture for the long-term unemployed, those with a general lack of confidence, homeless people, ex-offenders, people with physical and learning disabilities and people recovering from alcohol and drug dependency.

#### **Sophie Talbot**

Sophie was one of the three organisers of the TolpuddleKX 2009 festival. She gained her Master of Science degree in organisation development consultancy at Sheffield Business School. She has 25 years experience of working in and with community and voluntary sector organisations starting with single issue campaigns such as Leeds Campaign for Welfare Benefits and the national Campaign for Bedsit Rights and including having worked with ex-combatants in the Boland area of South Africa's Western Cape. Latterly she was responsible for mainstreaming equal opportunities in European Structural Funds for the London Programme Committee at Government Office for London, and managing the cross-sectoral consultation process used to produce the London Economic Development Strategy for the London Development Agency and Greater London Authority. She has managed two Single Regeneration Budget programmes: the Pan London Community Regeneration Consortium and Putting New Heart into Grahame Park.



## Partners and supporters

### **Camden Garden Centre**

A social enterprise owned by a local charity. CGC is an award winning garden centre providing employment, education and training for local disadvantaged people. [www.camdengardencentre.co.uk](http://www.camdengardencentre.co.uk)

### **Copenhagen Youth Project**

A youth charity which works with young people living in the deprived area of North King's Cross, helping them develop their skills and confidence. CYP brings the achievement of the young people to the public in the form of displays, exhibitions, music events, youth conferences and partnerships with key businesses and organisations. [www.cypproject.org](http://www.cypproject.org)

### **Groundwork North London**

Groundwork supports communities in need, working with partners to help improve the quality of people's lives. Each Groundwork Trust is a partnership of the public, private and voluntary sectors with its own board of trustees. Groundwork North London covers Camden, Islington and Westminster. [www.groundwork.org.uk](http://www.groundwork.org.uk)

### **Kingscrossenvironment.com**

Aims to make our neighbourhood a better place. Includes Kings Cross news, views, events and grumbles. Help us all work together as a community. [www.kingscrossenvironment.com](http://www.kingscrossenvironment.com)

Our particular thanks to the owners of the wall, the land at the base of the wall and the building adjacent to it. Both have agreed to the project subject to final design approval:

### **Complete Offices**

Provide cost effective, flexible and, most importantly, offices of a high quality within desirable locations of North and North West London. Complete Offices own Lighterman House, Wharfdale Road – including the wall to be used for the vertical garden. [www.completeoffices.co.uk](http://www.completeoffices.co.uk)

### **Places for People**

Places for People is committed to providing sustainable communities. Our focus is on creating places where people choose to live - whether that means providing new communities or transforming existing neighbourhoods into vibrant, popular areas to live and prosper. Places for People own Battlebridge Court, the block adjacent to the wall as well as the land at the base of the wall. [www.placesforpeople.co.uk](http://www.placesforpeople.co.uk)

## Money

The project is planned to run over 15 months. The start date will depend on how much money we can raise on top of the first £52,000 we have already raised, and on the time of year. We don't want to be planting during the driest summer months.

### Budget

	1st 3 months	2nd 3 months	3rd 3 months	4th 3 months	5th 3 months	Total
<b>Expenditure</b>						
Copenhagen Youth Project Team costs	7500	7500				15000
Consultation training course	500	500				1000
Consultation process	500	500	500			1000
Construction & installation works		25000	46000	500		71000
Launch event					200	500
Evaluation report					200	200
<b>Total</b>	<b>8000</b>	<b>8500</b>	<b>25500</b>	<b>46500</b>	<b>200</b>	<b>88700</b>
<b>Income</b>						
LB Islington S106	25000			25000		50000
The Driver	2000					2000
<b>Total</b>	<b>27000</b>	<b>0</b>	<b>0</b>	<b>25000</b>	<b>0</b>	<b>52000</b>
<b>Balance</b>	<b>19000</b>	<b>10500</b>	<b>-15000</b>	<b>-36500</b>	<b>-36700</b>	<b>-36700</b>

### How you can donate

Please help us make this local dream project a reality. Every penny you can spare will help.

King's Cross Community Projects is a registered charity. Cheques should be made payable to KCCP and sent to the address overleaf.

Our website includes a donate button should you prefer to give online.

Transfers should be made to KCCP, Co-operative Bank, sort code 08-92-99, account number 65286115.

Kings Cross Community Projects  
32 Battlebridge Court  
Wharfdale Road  
London  
N1 9UA

[kccp@cookie.org.uk](mailto:kccp@cookie.org.uk)

[www.cookie.org.uk/kccp](http://www.cookie.org.uk/kccp)

Registered charity number 1124925